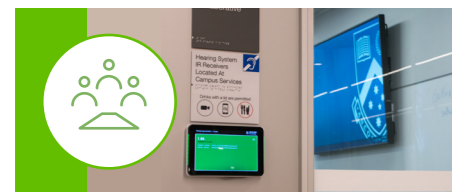


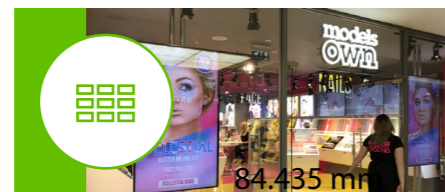


Model	MBR-1100	XMP-6250	XMP-6400	XMP-7300
Applications	Air-conditioned indoors	General purpose	Sports bar, waiting area	Large displays, video walls
Highlight	Low cost	Solid state	HDMI-in, HDCP 1.4, RS-232	True 4K, high performance
Display	HDMI, 1080p	HDMI, 1080p	HDMI, 1080p, VGA	HDMI 2.0, 4K @ 60 fps
CPU	ARM 4-core A9	ARM 4-core A9	ARM 4-core A9	ARM 4-core A17
Media playback	H.264, HTML5	H.264, HTML5	H.264, HTML5, live video-in	H.264, H.265, HTML5
Networking	Wi-Fi, Ethernet	Wi-Fi, Ethernet	Wi-Fi, Ethernet	Wi-Fi, Ethernet
Operating temperature	32 ~ 104° F 0 ~ 40° C	-4 ~ 122° F -20 ~ 50° C	-4 ~ 122° F -20 ~ 50° C	-4 ~ 122° F -20 ~ 50° C



Meeting Room Management

Integration with both Google Calendar and Syllabus Plus was a crucial factor in Monash University's decision to go with IDea and Melbourne-based software partner, Concierge. Monash is already looking to the future for how in-house data can be used to improve the efficient utilization of its rooms. More meeting room projects from IDea to come – stay tuned on our website.



Video Wall for Retail

Models Own, a cosmetics brand that was originally founded in 2008, wanted to enhance its retail presence and grow its market share by opening a flagship store by utilizing the benefits of digital signage and video walls, such as great visual impact. IDea and UK-based software partner Signagelive delivered and now the content looks spectacular.



Menu Board

Japanese sushi and bento restaurant chain, Wasabi, has digitalised its menu boards across seven of its London locations. Signagelive is used across the system to standardise the content control and enable remote updates. The system is synchronized via IDea XMP-7300 media players with AnyTiles solution, which supports 4K content and mounted using B-Tech brackets.



Transportation

Envisioning a future where intelligent transportation platforms are abundant. High-quality digital signage solutions that broadcast dynamic contents are required for a satisfying passenger commute experience.



Retail

A vibrant and engaging retail customer experience is the #1 priority for all retail businesses. From our smallest countertop displays to robust 4K players, IDea creates a digital customer journey through your store.



Lift n' Learn for Retail

Dermalogica UK adds Lift and Learn to in-store digital to enhance customer engagement, deploying solutions from IDea and Signagelive. Dermalogica now owns an easy, reliable means to centrally manage its countrywide digital signage network, comprising multiple displays types, sizes and orientations. IDea Lift n' Learn is extremely popular with retailers all over the world.



Visualizing the Future

IDea is the leading provider in cutting-edge commercial-grade digital signage players, integrated displays and video walls, from 4K video to animated HTML5 and interactive touch screens.

IDea powers more than 300,000 displays worldwide. Whether your business is in retail or hospitality, restaurants or transportation, work with us and be a part of the winning team today.

IDea Headquarters
3F, No. 21, Lane 168, Xiangshan Road
Taipei, Taiwan 114
Phone: +886-2-2791-1110
Fax: +886-2-2791-1170
Email: sales@idead.com

IDea America Corp.
20 Fairbanks, suite 170
Irvine, CA 92618
USA
Phone: +1-949-305-6489
Email: us-sales@idead.com





To Market, To Market!

Specialty Displays for MagicINFO by IAdea

10", 15", 22" all-in-one displays supporting MagicINFO

IAdea delivers a full range of integrated displays to complement the standard public display sizes. These smart all-in-one signboards complete the range of display sizes needed for digital signage projects IAdea partners with Samsung to make MagicINFO, a simple yet powerful content management software, available across display sizes not offered by Samsung.



XWS-3785

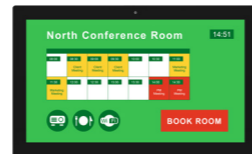
- 1) 37" 1920 x 540 LCD wide aspect ratio
- 2) High brightness (700 nits)
- 3) 178/178 wide view angle IPS panel
- 4) Ethernet Giga LAN, wireless 802.11b/g/n

XWS-2885

- 1) 28" 1920 x 360 LCD wide aspect ratio
- 2) High brightness (700 nits)
- 3) 178/178 wide-view angle IPS panel
- 4) Ethernet Giga LAN, wireless 802.11b/g/n

XWS-2185

- 1) 21" 1920 x 132 LCD wide aspect ratio
- 2) 178/178 wide view angle IPS panel
- 3) 10/100 Ethernet, wireless 802.11b/g/n
- 4) Perfect choice for on-shelf price tag & advertising



XDS-3288

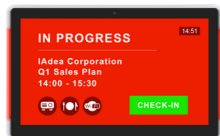
Smart Workplace Series:
32" widescreen all-in-one interactive display

- 1) Quad-core CPU for high performance
- 2) 32" 1920 x 1080 LCD wide aspect ratio
- 3) 178/178 wide-view angle IPS touch screen
- 4) Ethernet Giga LAN, wireless 802.11b/g/n
- 5) Built-in stereo speakers 3 W x 2

XDS-2288

Smart Workplace Series:
22" touch-enabled all-in-one smart signboard

- 1) 21.5" 1920 x 1080 LCD wide aspect ratio
- 2) 10-point multi-touch
- 3) 178/178 wide-view angle IPS panel
- 4) Ethernet Giga LAN, wireless 802.11b/g/n
- 5) Built-in stereo speakers 2 W x 2



XDS-1588

Smart Workplace Series:
15" NFC / RFID all-in-one smart signboard

- 1) Quad-core CPU for high performance
- 2) 10-point multi-touch
- 3) PoE+ for one-cable easy installation
- 4) Ethernet Giga LAN, wireless 802.11b/g/n
- 5) Built-in stereo speakers 2 W x 2

XDS-1088

Smart Workplace Series:
10" HID optional all-in-one smart signboard

- 1) 10.1" 1280 x 800 wide 400-nit LCD
- 2) 10-point multi-touch
- 3) PoE for one-cable easy installation
- 4) Ethernet Giga LAN, wireless 802.11b/g/n
- 5) Built-in stereo speakers 2 W x 2
- 6) NFC embedded for easy system integration

XDS-1078

10" meeting room smart signboard

- 1) 10.1" 1280 x 800 LCD wide aspect ratio
- 2) 10-point multi-touch
- 3) PoE for one-cable easy installation
- 4) HDMI output to external display
- 5) Built-in stereo speakers 1 W x 2

IAdea All-in-One Smart Signboards



Model	XDS-1078	XDS-1088	XDS-1588	XDS-2288	XDS-3288	XWS-2185	XWS-2885	XWS-3785
Size (inches)	10.1"	10.1"	15.6"	21.5"	32"	21"	28"	37"
Aspect ratio	16:10	16:10	16:9	16:9	16:9	16:1	16:3	32:9
Resolution	1280 x 800	1280 x 800	1920 x 1080	1920 x 1080	1920 x 1080	1920 x 132	1920 x 360	1920 x 540
Touch	Yes	Yes	Yes	Yes	Yes	-	-	-
Brightness (nits)	300	400	300	250	250	300	700	700
CPU	ARM 4-core A9	ARM 4-core A17	ARM 4-core A17	ARM 4-core A17	ARM 4-core A17	ARM 4-core A9	ARM 4-core A17	ARM 4-core A17
NFC / RFID card	External	Embedded	Optional embedded NFC / RFID reader	External	External	External	External	External
LED lightbar	Yes	Yes	Yes	-	-	-	-	-
PoE	Yes	Yes	PoE+	-	-	-	-	-
Zero-gap mount	Yes	Yes	Yes	-	-	-	-	-
Camera	Yes	Yes	Yes	Yes	-	-	-	-
Mounting options	VESA 75 x 75 glass mount tilt mount	VESA 75 x 75 glass mount tilt mount	VESA 100 x 100 table stand tilt mount	VESA 100 x 100 table stand	VESA 100 x 100 table stand	wall mount	wall mount	wall mount



A device intelligence and management service that helps ensure digital signage deployment runs reliably as planned. IAdeaCare enables prevention of device failure with data-driven predictive maintenance, which is designed to help determine the condition of in-service equipment in order to proactively perform maintenance.



Utilize any number of screens running on supported IAdea media players to create magnificent and immersive experiences. This award winning technology is great for corporate lobbies, retail flagship stores, and branding events.



Get started with this bundled software utility to quickly spin up a proof-of-concept demo and take full advantage of features available on IAdea's hardware. The cloud option provides a simple content distribution solution to enable you to grow your deployment from 1 to 100 in record time.

IAdea Media Players and Accessories



XMP-7300

The one and only True 4K

- 1) HDMI 2.0 certified
- 2) Supports 4K @ 60 fps
- 3) Wide temperature operation (-20 ~ 50° C)
- 4) True 4K playback for video / image / HTML5
- 5) Supports AnyTiles video wall controller engine
- 6) Gigabite Ethernet, wireless 802.11b/g/n



XMP-6400

The engine that powers your most unforgettable visual experience

- 1) HDCP 1.4 certified, FHD @ 1080p
- 2) Wide temperature operation (-20 ~ 50° C)
- 3) VGA and RS-232 for extra applications
- 4) HDMI-input source for live media
- 5) Ethernet 10/100 BASE-T, wireless 802.11b/g/n



XMP-6250

Your must have player: mainstream and ready to go!

- 1) Packed with all mainstream, standard features
- 2) Solid state with full HD @ 1080p image quality
- 3) Wide temperature operation (-20 ~ 50° C)
- 4) Advanced audio: analog stereo-out + S/PDIF
- 5) Compatible with multiple 3rd-party software
- 6) Ethernet 10/100 BASE-T, wireless 802.11b/g/n



MBR-1100

Palm size, light-weight, cable-free

- 1) Compact and plug-n-play
- 2) Full HD @ 1080p image quality
- 3) Comes with self-recovery mechanism
- 4) Ethernet 10/100 BASE-T, wireless 802.11b/g/n
- 5) High-gain antenna enabling smooth video playback



PSP-102U/104/108 series

2/4/8-port True 4K HDMI splitter

- 1) HDMI 2.0a, HDCP 2.2 compatible, HDR 10, 3D
- 2) Video output up to 4K2K @ 60 (4:4:4 8 bits)
- 3) Supports Dolby Digital, Dolby TrueHD, DTS-HD
- 4) Smart source-to-display resolution adjustment
- 5) Convenient EDID switch setting

Did you know?



IAdea is now proudly an HID Advantage Technology Partner. Bringing you better integration and support.